

Contents

Touch Design – Screen Design.....	2
Understanding the layout of Screen Design.....	3
Editing Existing Screens.....	5
Adding New Screens	8
Linking a PLU to a Button	9
Creating a Jump To Screens Button.....	10
Creating a Touch Group in Screen Design	10
Linking POP-UP Screens to a PLU	12
Multi-Select Screens	15
Previewing Changes	17
Resetting Screens and Publishing Screens	18

Pilot SQL V4.8

Touch Design – Screen Design

Screen Design is used to create screens for your different menu departments and link PLUs as well as their modifiers (customer options) to certain buttons on each screen the waitrons can then click on in order to place an order.

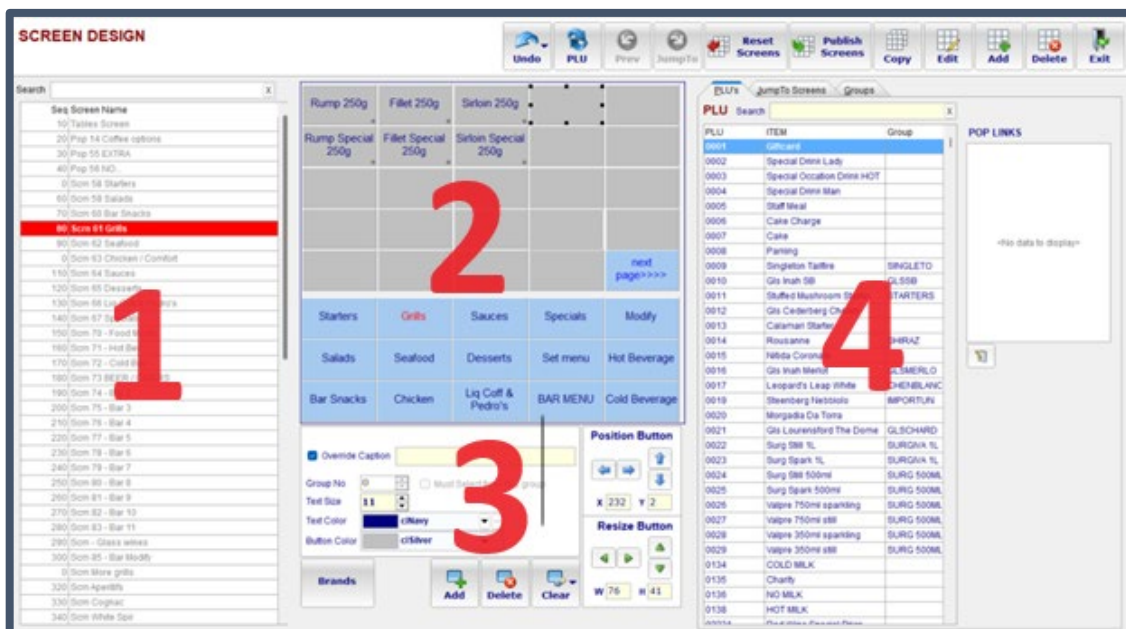
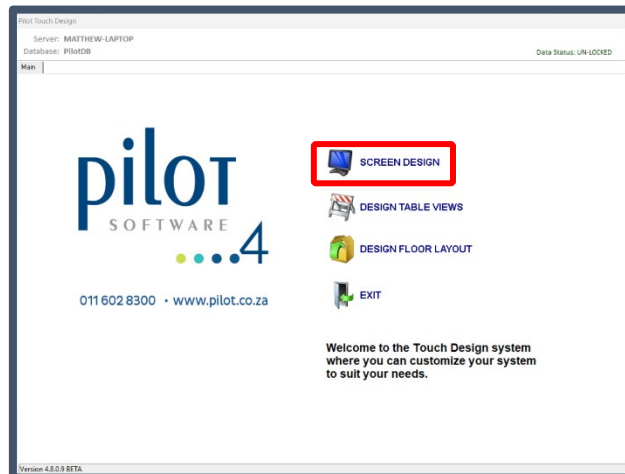
You will first need to make sure that the PLU as well as its modifiers are created properly in the PLU file. [\(click here to watch our How To Videos\)](#)

To enter Touch Design, in Pilot Admin, click on the Touch Design button.



Understanding the layout of Screen Design

Select the SCREEN DESIGN option.



1 – This is a list of your different screens on the Pilot system. This includes all pop-up screens and multi-select screens. Screens can be added, copied and deleted from this list.

2 – This is a visual display of the selected screen. On this screen you will be able to link PLUs directly to a button, clear links off of a button, create touch group buttons and set buttons to jump to a different screen.

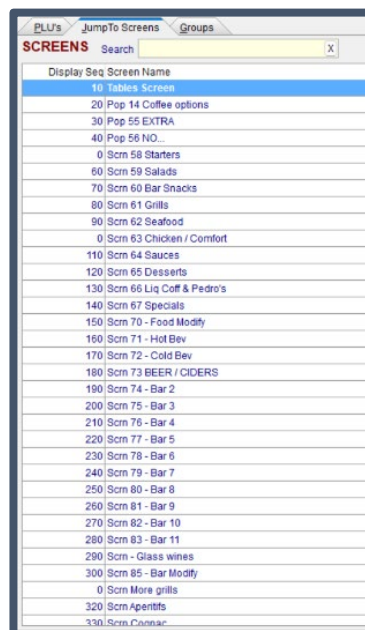
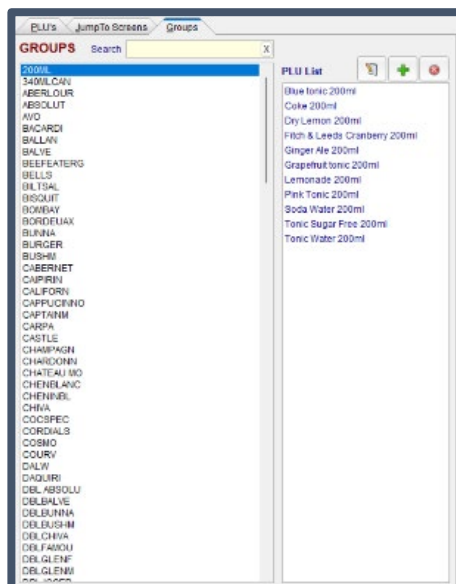
3 – Here you can customize the buttons, by shape, size, color and caption

4 – In this list you will find three tabs.

By selecting the PLU tab, you can link a PLU directly to a button. You can also see if the PLU belongs to any Touch Group and which pop-up screens this PLU is linked to.

When selecting the Jump to Screens tab, you will see a list of your different screens. Here you will be able to link a button to jump to a different screen.

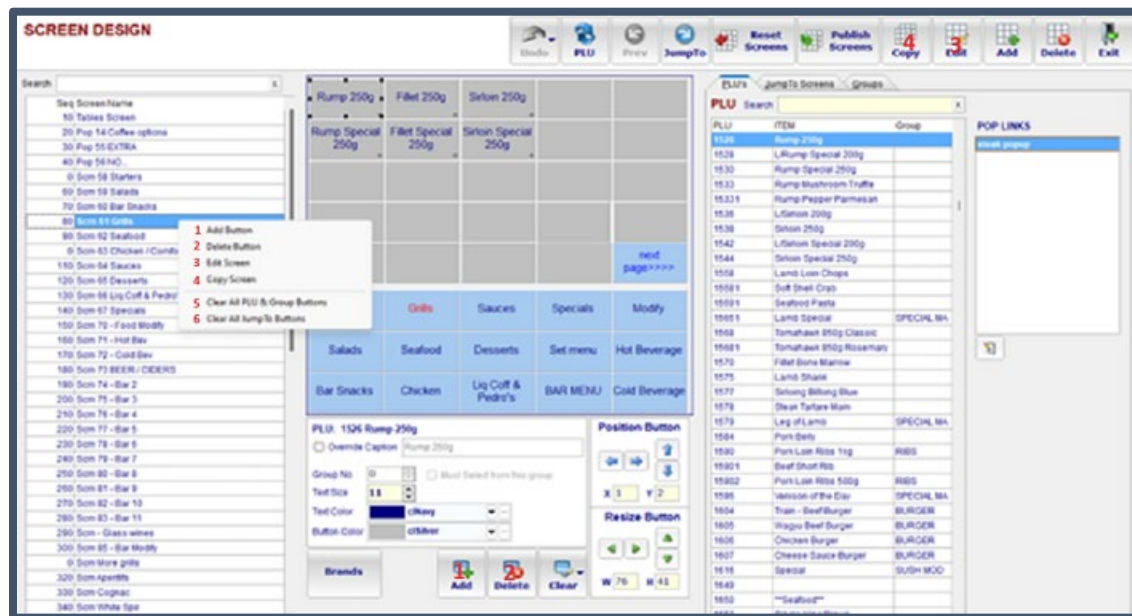
When selecting the Groups tab, you can see a list of your Touch Groups and which PLUS are linked to that particular group. Here you can assign more PLUs to a Touch Group and link a Touch Group to a button on the selected screen.



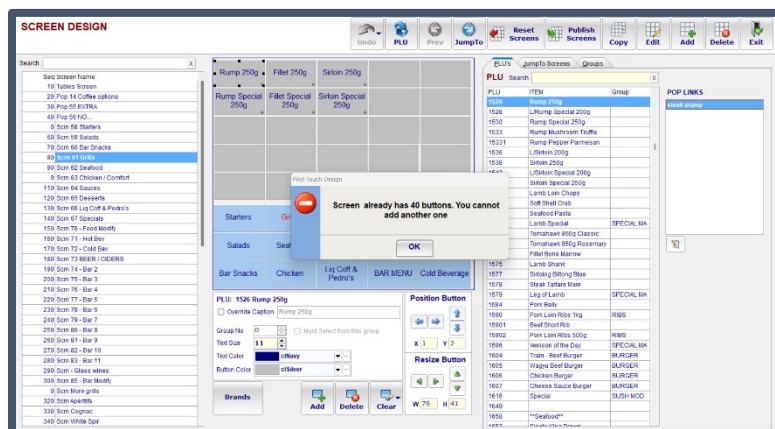
Editing Existing Screens

To edit an existing screen, first search the screen you wish to edit.

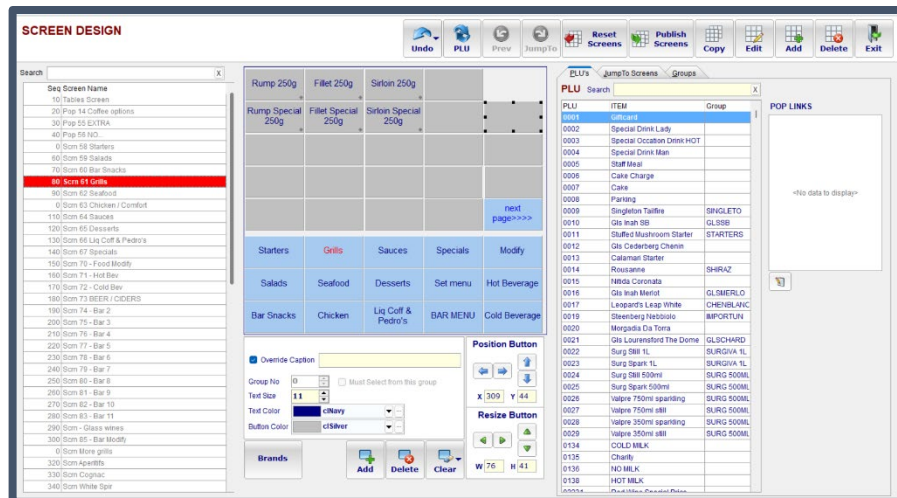
Then right click on the selected screen.



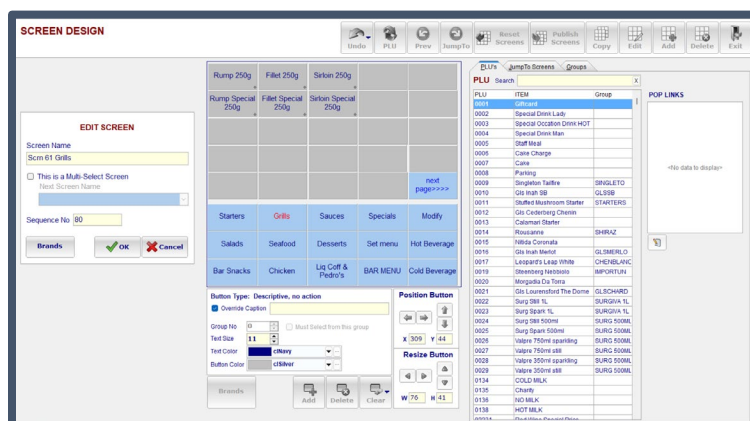
1 - Add Button – This is the first option in the list and can also be found in the bottom center of the screen. Use this option to add more buttons to the selected screen. A maximum of 40 buttons is allowed per screen.



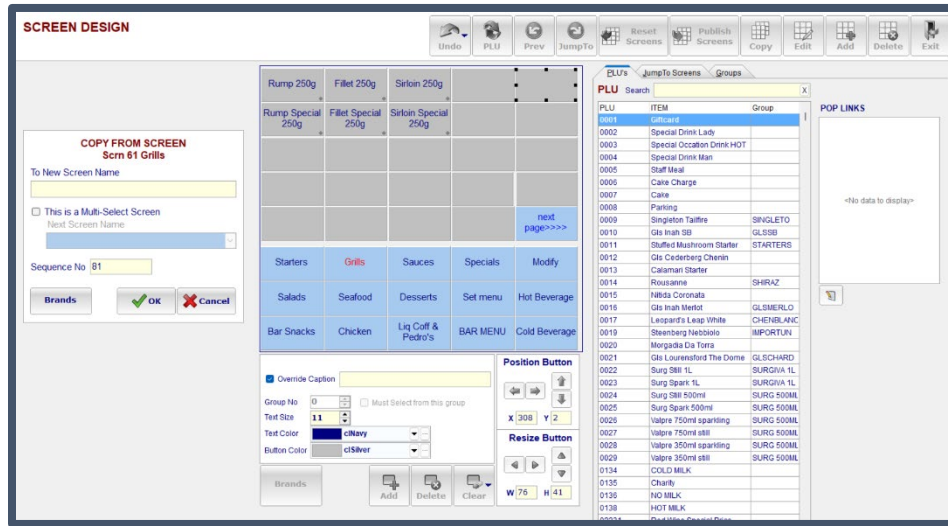
2 – Delete Button – This is the second option in the list and can also be found at the bottom center of the screen. First select the button you wish to delete from the selected screen and then select delete button. This will remove the entire button from the screen



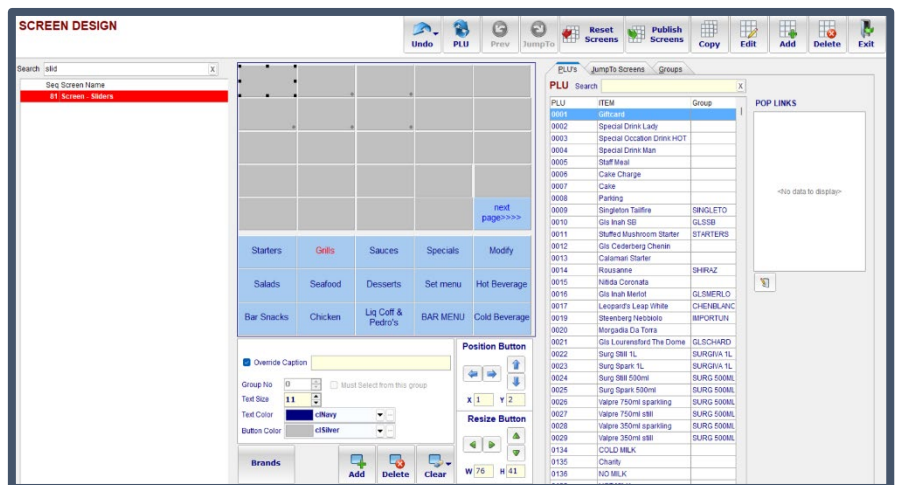
3 – Edit screen – This is the third option in the list and can also be found at the top left of the screen. Using this option will allow you to rename the screen, set the screen as a multi-select screen, change the screens sequence number and if you use sub-brands, you can select which sub brands this screen will be used for.



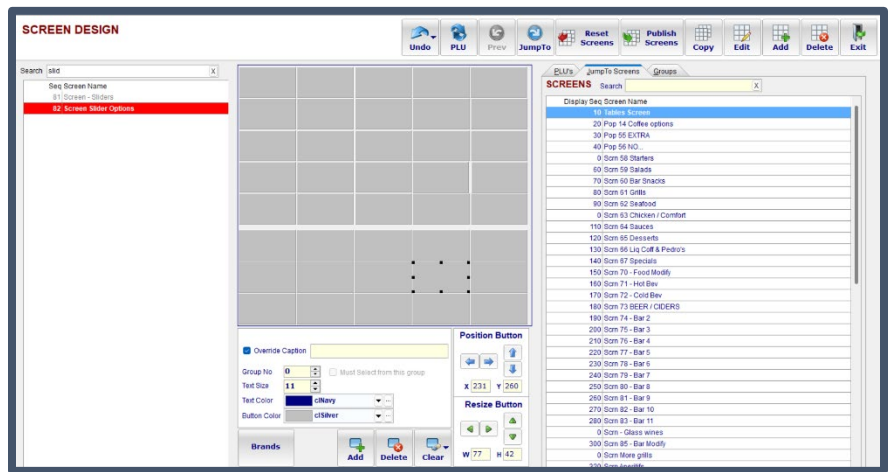
4 – Copy Screen – This is the fourth option in the list and can also be found at the top left of the screen. Selecting this option will allow you to copy the existing screen, with all its buttons and links to a brand-new screen which you can then name, set as a multi-select screen or allocate to a sub brand.



5 – Clear All PLU & Group Buttons – Selecting this option will clear all PLU and Touch Group links on the selected screen. You can use this option after copying an existing screen to a new screen. After clearing all the links, you can then link the relevant PLUS and Groups to the buttons on the new screen. You can also use the Clear button located at the bottom center of the screen; however, this only clears links off the selected button and not the entire screen.



6 – Clear All Jump to Buttons – Selecting this option will clear all jump to buttons on the selected screen. You may use this option is creating a new pop or multi-select screen. Using the Clear button located at the bottom center of the screen will only clear the Jump To link of the selected button and not the entire screen.

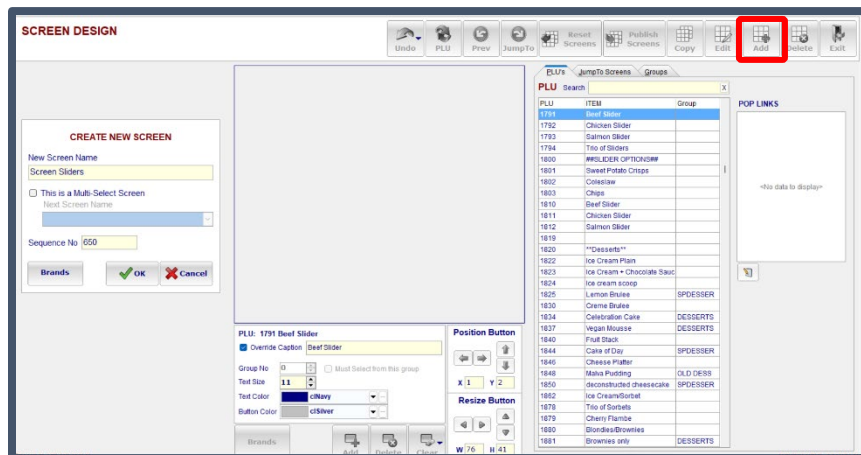


Adding New Screens

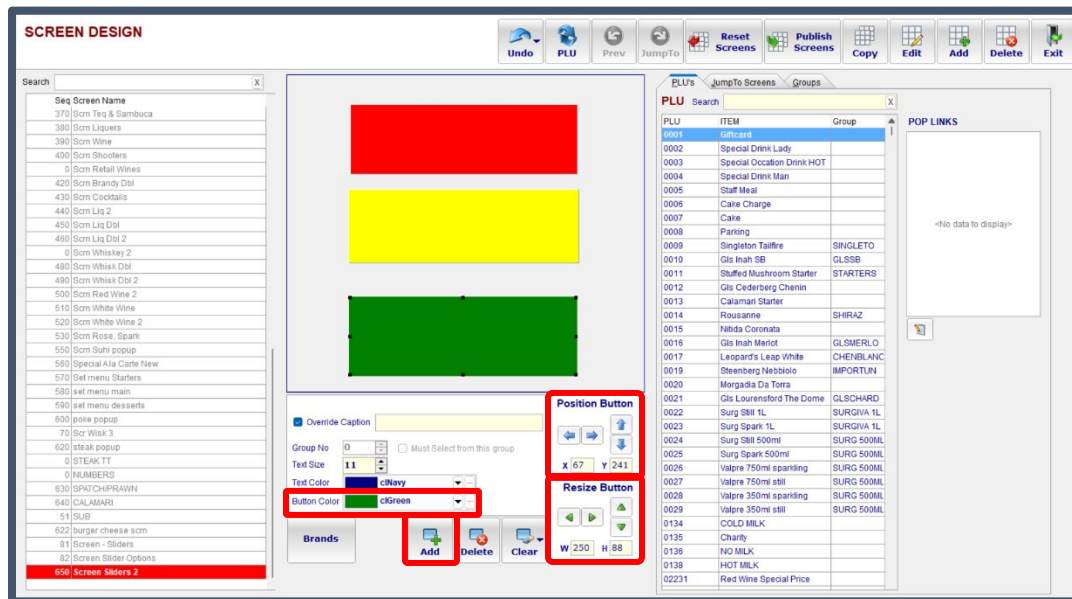
To add a new screen, you can either copy an existing screen to a new screen as shown above and clear all PLU and Group links,

Or

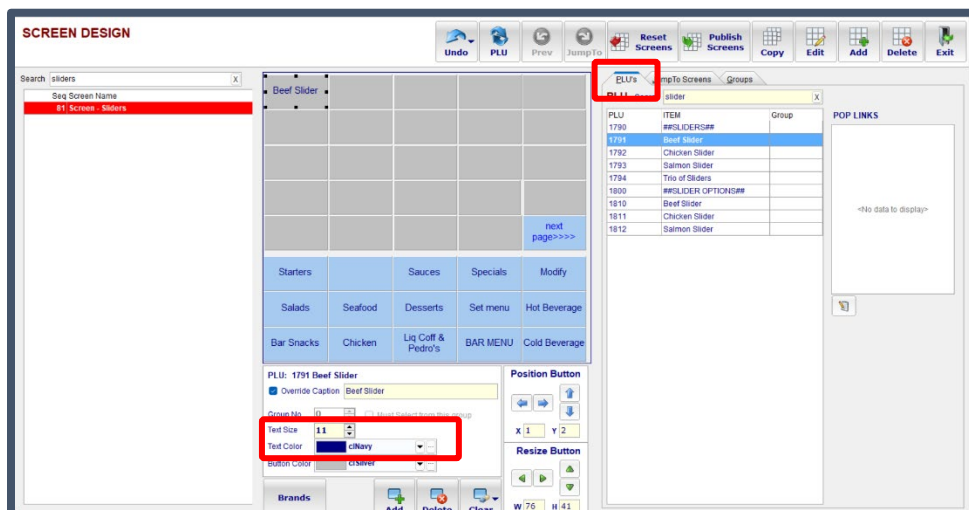
Click on the Add button located at the top left of the screen. You can now name the screen, set it to be a multi-select screen if required, and allocated it to a sub brand if required. This however creates an empty screen. No buttons. This is a good way to create new pop-up screens.



Click on the Add button located at the bottom center of the screen to add buttons. You can use either your mouse or the position and resize buttons to move the buttons into the position you want and resize them. You can also change the button colors. You are allowed a maximum of 40 buttons per screen.



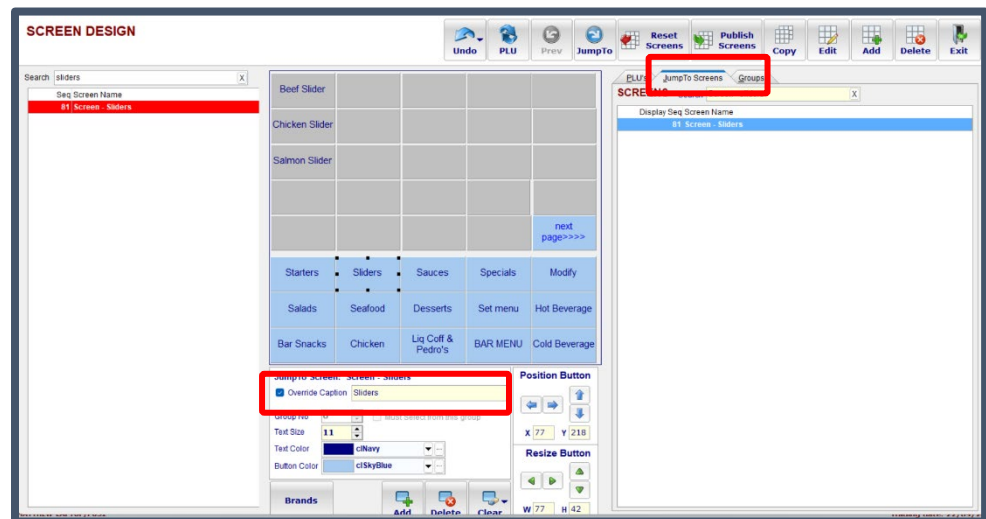
Linking a PLU to a Button



To link a PLU to a button, first make sure you have selected the correct screen you wish to work on. Then select the button you wish to link to the PLU. Make sure your PLU tab is selected. Search for the PLU you wish to link to the button and once found double click to link. If you wish to change the text color you can do so from the customize section of the Screen Design layout.

Creating a Jump to Screens Button

To create a Jump to Screen button, first make sure you are working on the correct screen. Select the button you wish to make jump to a different screen. Make sure you have selected the Jump to Screens tab. Search for the screen you wish this button to jump to and double click. You can adjust the caption by making sure Override Caption is ticked.

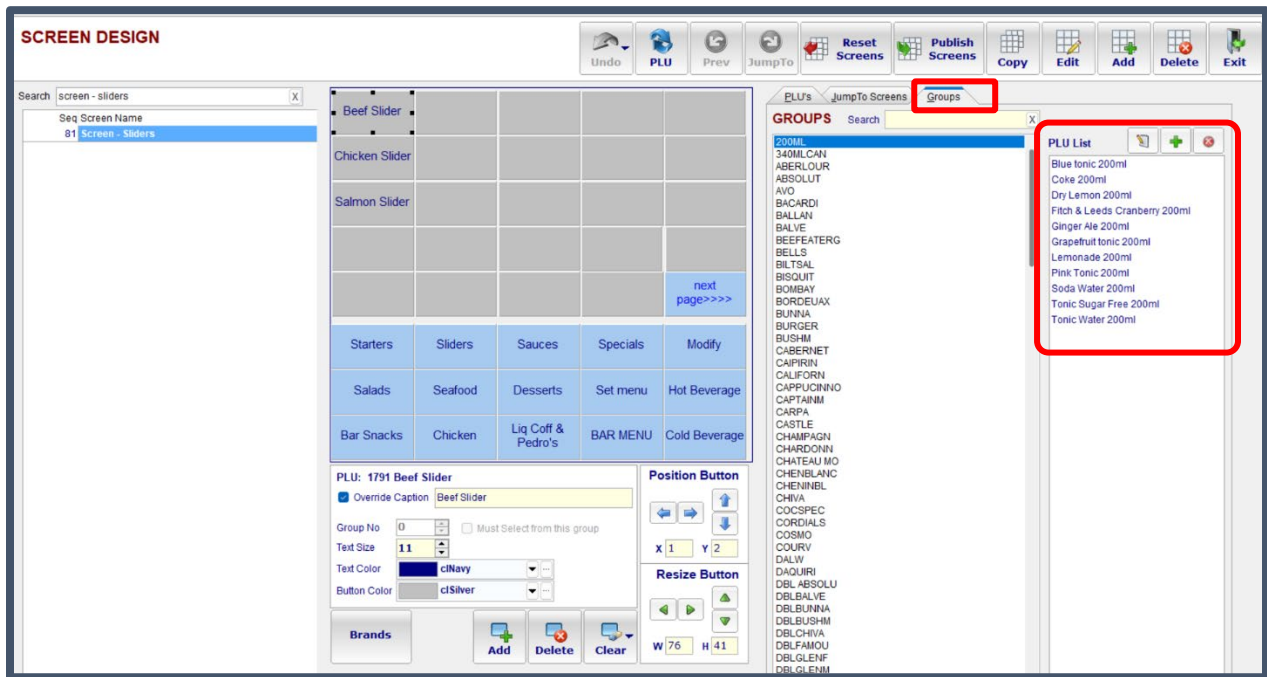


Creating a Touch Group in Screen Design

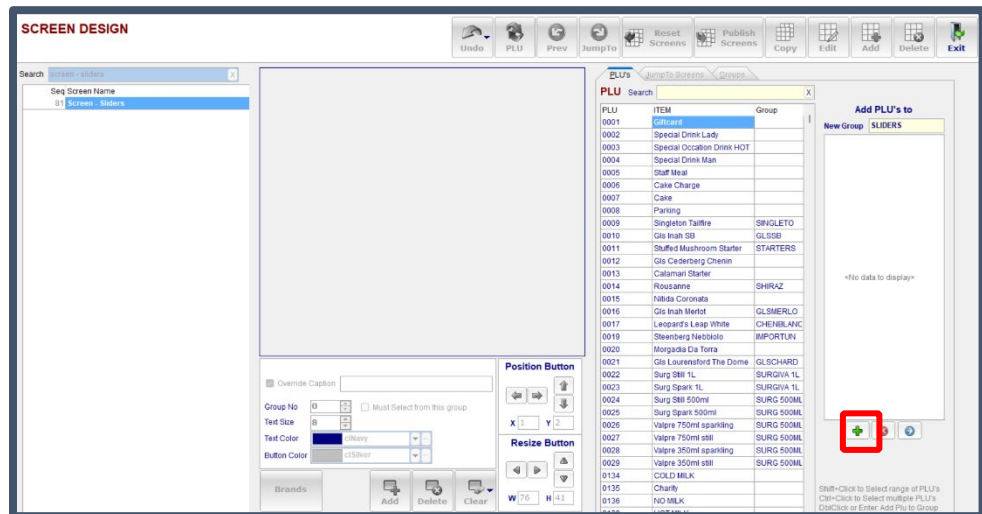
Touch Groups are a great way to save button space on your POS screen. Rather than linking each PLU to its own button, you can link PLUs into a Touch Group and then link the Touch Group to the button.

Creating Touch Groups and assigning PLUs to a Touch group can also be done from within the PLU file.

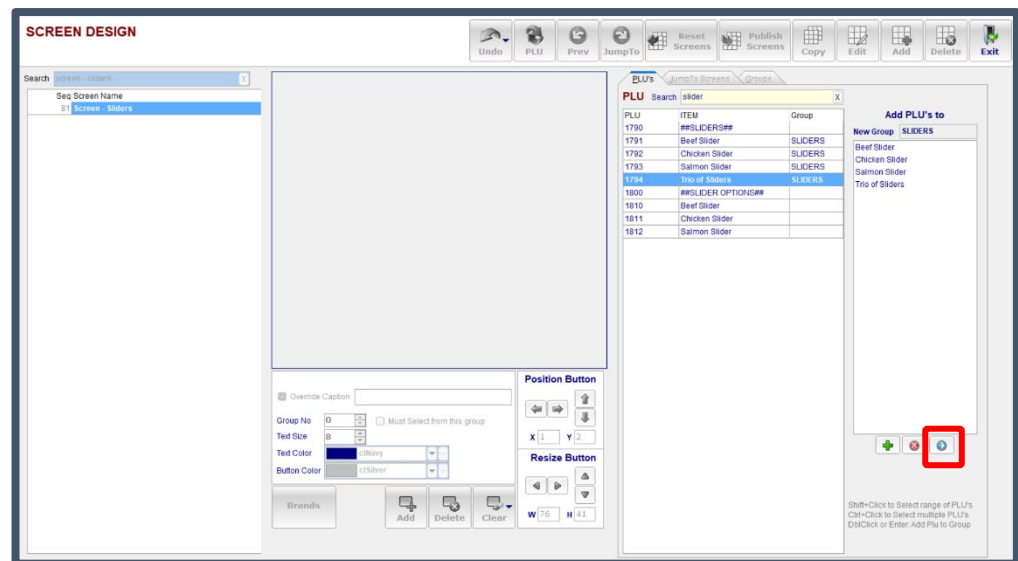
To view your existing Touch Groups or to create a new Touch group select the Groups tab. You will now be able to see existing groups and under the PLU List column you will see the PLUs linked to this Group.



To create a new Touch Group, click on the PLUS (+) button above the PLU List column. In the New group field type in the name of the new Touch Group.

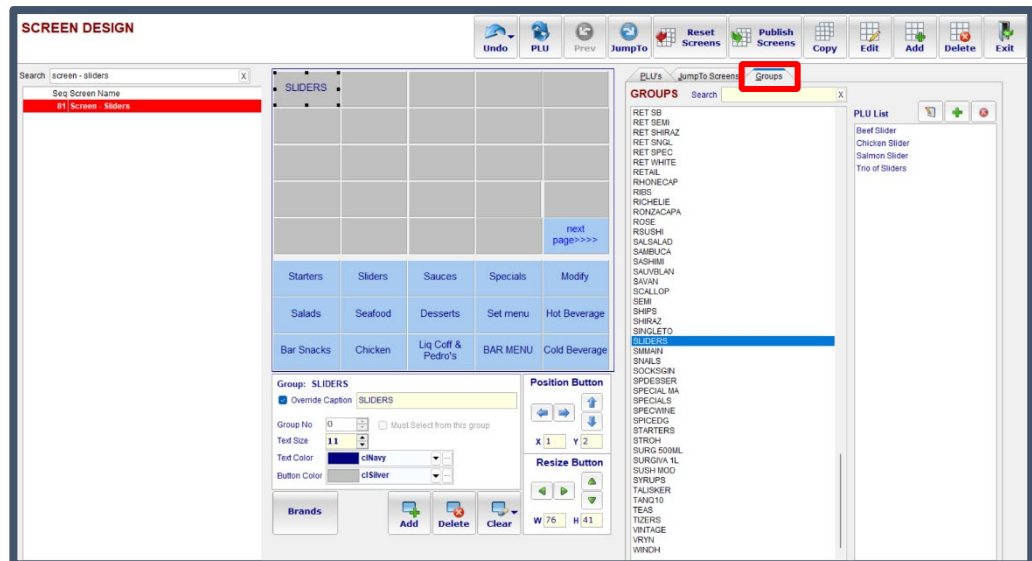


You will notice that the PLU tab is now selected with the Jump to Screens and Groups tabs being greyed out. To link PLUs into this Touch Group, you can type in the name of the PLU in the search field. Once found double click on the PLU or click the PLUS (+) button located at the bottom of the Add PLUs to Group column.



When finished linking the PLUs to the Touch Group, click on the blue arrow button located at the bottom of the Add PLUs to Group list.

To link a button to the Touch Group, make sure you have chosen the correct screen to work on. Click on the button you wish to link to the Touch Group, make sure the Groups tab is selected. You can search for the Touch Group you wish to link and once found double click on the Touch Group to link it.



Linking POP-UP Screens to a PLU

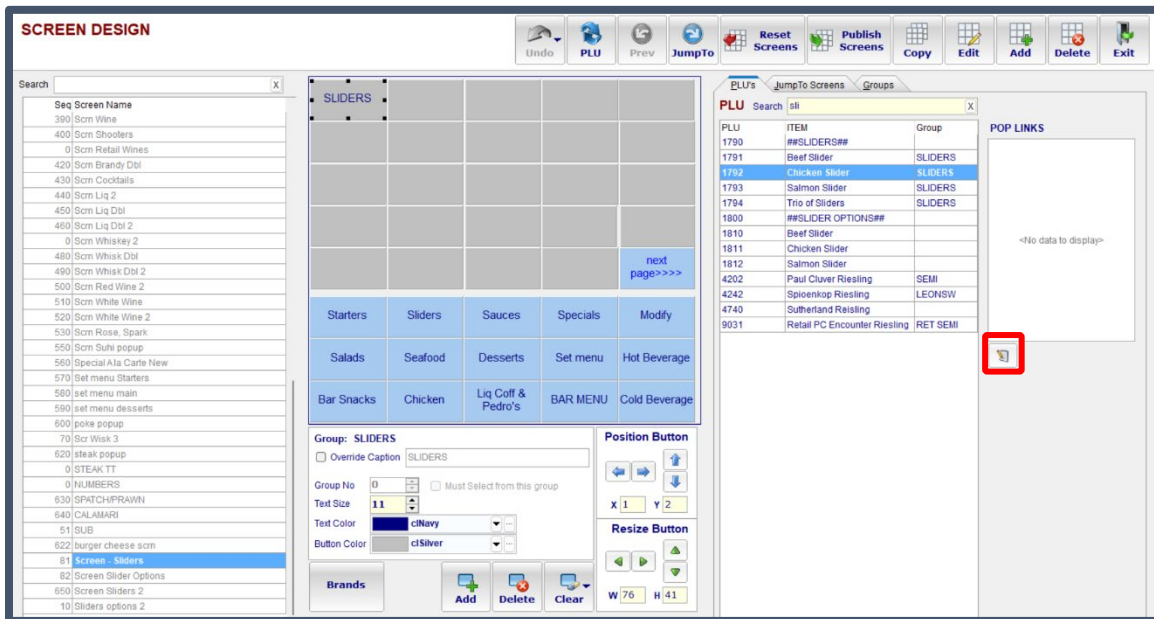
A POP-UP screen, is a screen on which the modifiers (customer options) of a PLU have been loaded. These screens will display after a PLU which is linked to these POP-UP screens has been ordered. A PLU can be linked to multiple POP-UP screens.

Make sure you have selected the PLU tab. You will see a list of your PLUs and under the POP LINKS column you will see any POP-UP screens which have been linked to the selected PLU.

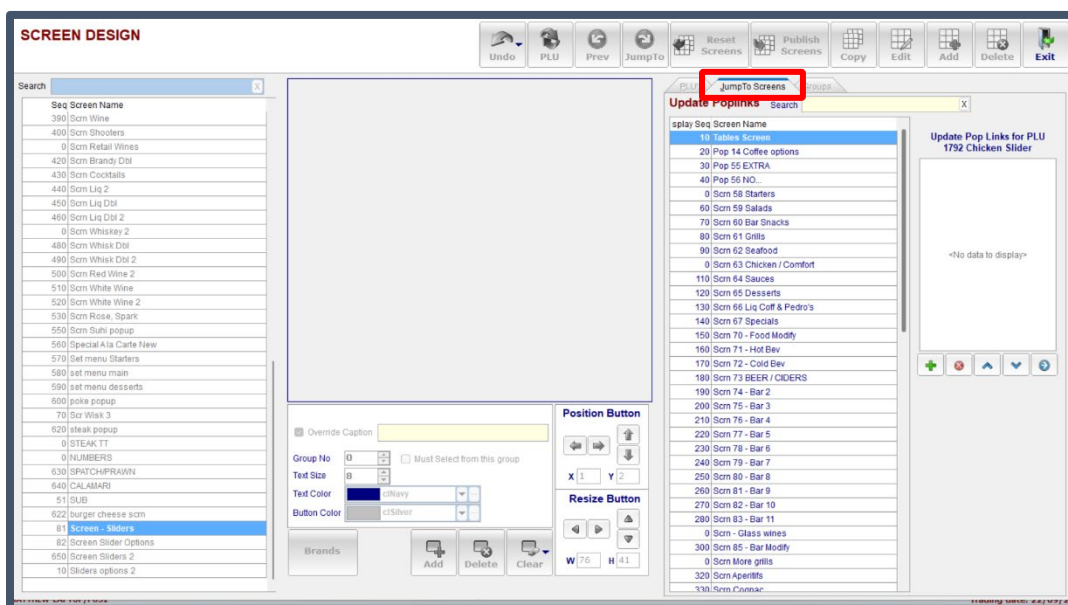
The screenshot displays the 'SCREEN DESIGN' interface. On the left is a searchable list of screen names (Seq, Screen Name, Pop NO.). The main area shows a menu grid with categories like Rump 250g, Fillet 250g, Tomahawk 850g Classic, etc. Below the grid is a configuration panel for 'PLU: 1526 Rump 250g' with fields for Group No, Text Size, Text Color, and Button Color. On the right, the 'PLU's' tab is active, showing a table of PLUs and a 'POP LINKS' section. The 'POP LINKS' section is highlighted with a red box and contains the entry 'steak popup'.

PLU	ITEM	Group	POP LINKS
1524	L.Rump 200g		steak popup
1526	Rump 250g		

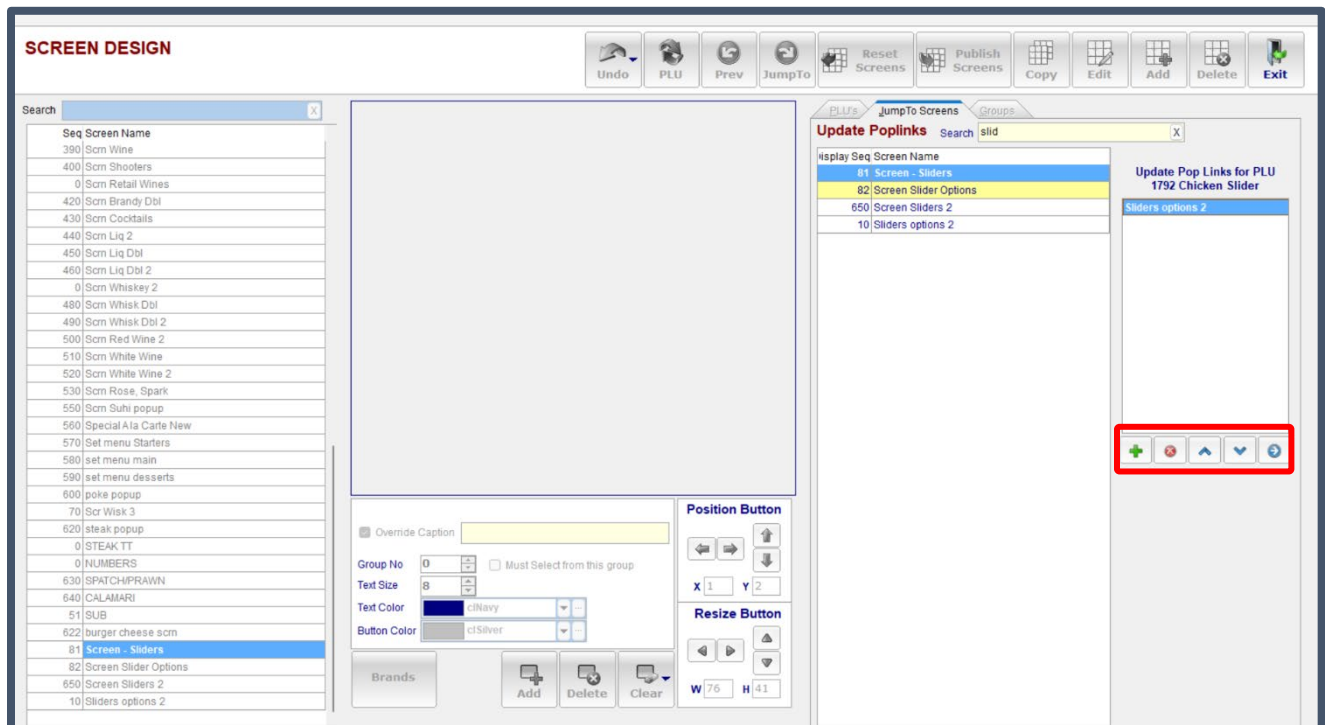
From the PLU tab, find the PLU you wish to add POP-UP screens to. Then click the edit button (notepad) under the POP LINKS column.



The Jump to Screens tab is now selected with the PLU and Groups tabs being greyed out. Search for the screen, under the Jump to Screens tab, you would like this PLU to jump to.



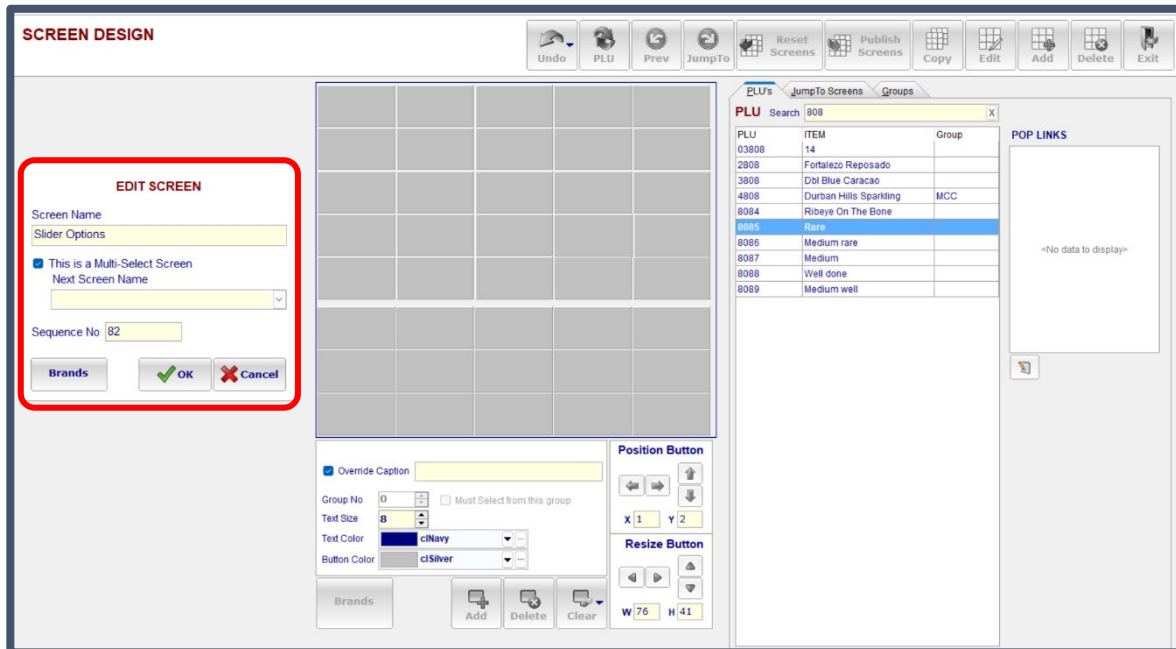
Once found, you can double click on the screen or click the PLU (+) button to add it as a POP-UP screen for the PLU. You can follow the same process to add multiple POP-UP screens to a PLU. You can also click the red x button to delete POP-UP screens from the list, and use the up and down arrow buttons to arrange the order of the POP-UP screens. When finished, click the arrow button that points to the right.



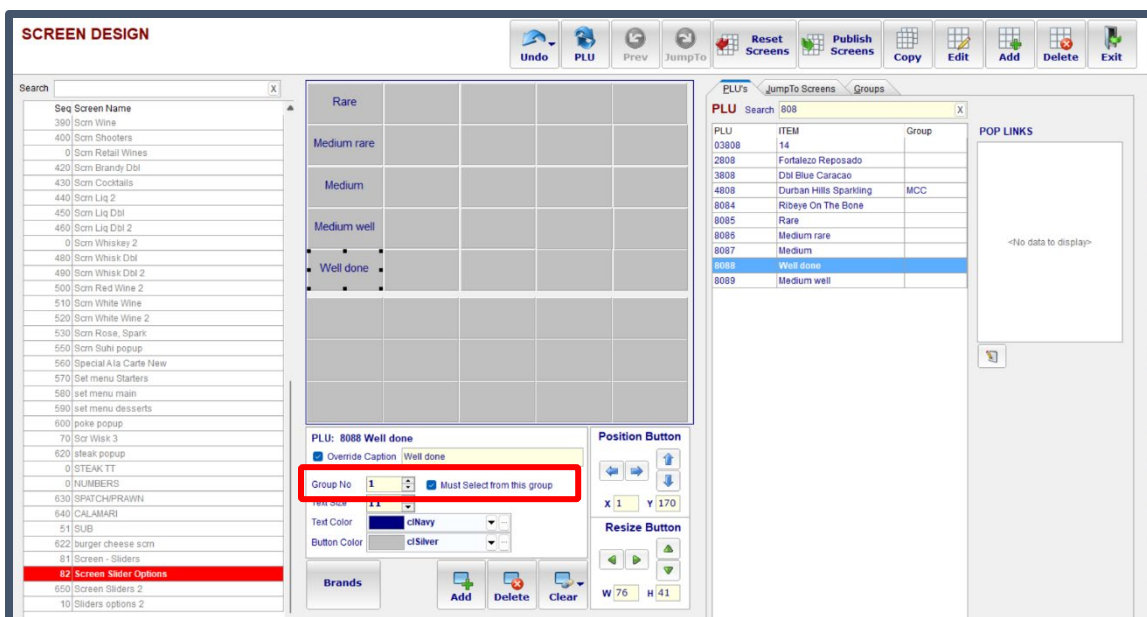
Multi-Select Screens

Multi-Select screens speed up the ordering process. Rather than creating multiple POP-UP screens for a PLU, you can create a Multi-Select screen and link all modifiers for the PLU to this one screen. Existing Multi-Select screen will display in yellow under the screen's column.

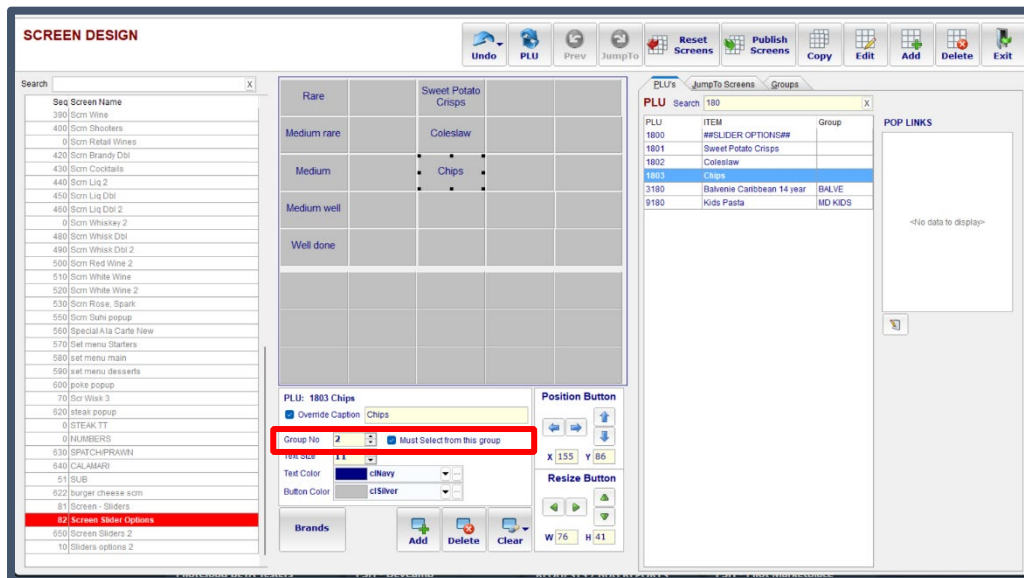
To create a Multi-Select screen, you can edit an existing screen, or click the add button to add a new screen. Name the screen and tick 'This is a Multi-Select Screen'.



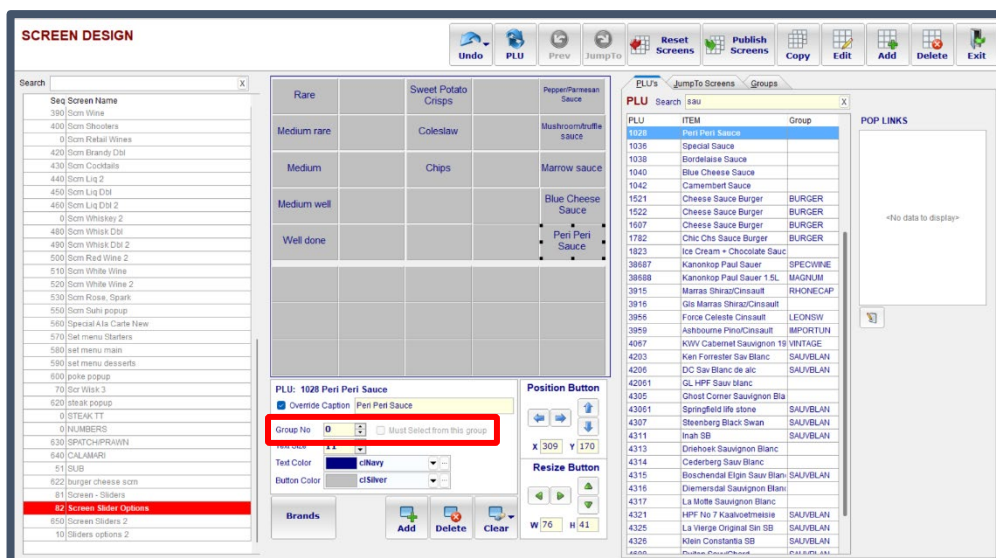
Begin by adding the modifiers that would have appeared on the first POP-UP screen. By Group No select 1, and tick Must select from this group.



Then create the modifiers that would have appeared on the second POP-UP screen. Set the group NO to 2 and tick Must Select from this group. Continue these steps until you have loaded all the modifiers in their respective groups.



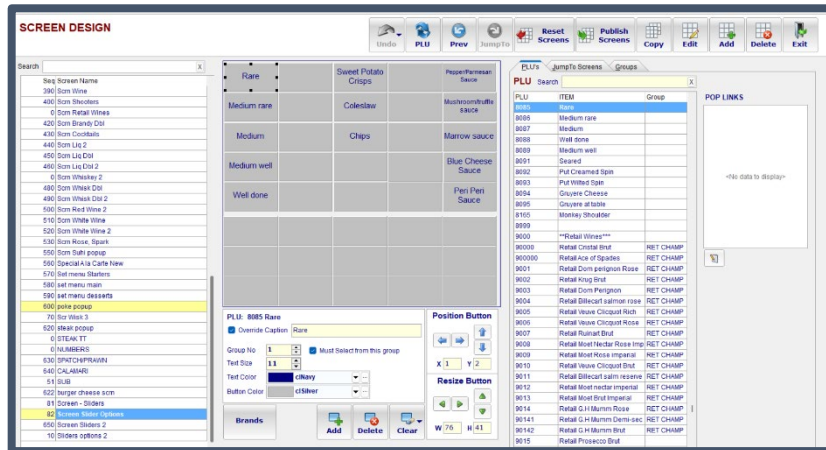
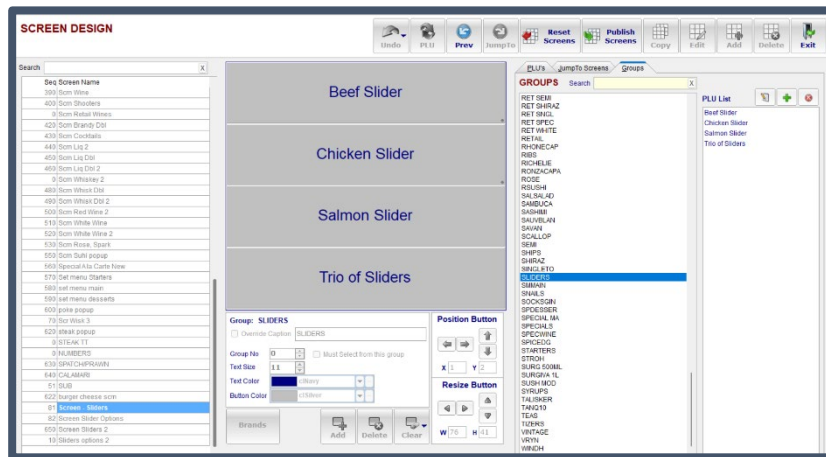
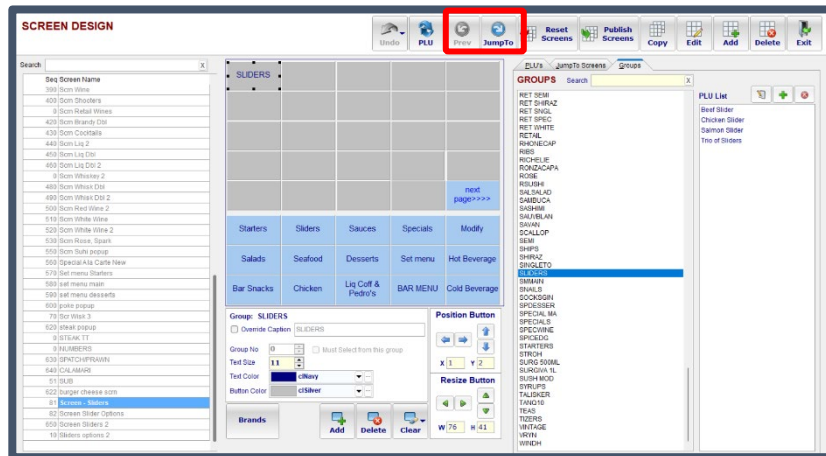
You can also add optional and chargeable PLUs to the Multi-Select Screen. Here I have loaded sauces that will be billed for. Set the Group No to 0 and do not tick Must Select from this



When you have finished creating the Multi-Select screen you can link it as the only POP-UP screen to its PLU.

Previewing Changes

You can use the Jump to and Prev buttons to preview what happens when you click on a button.

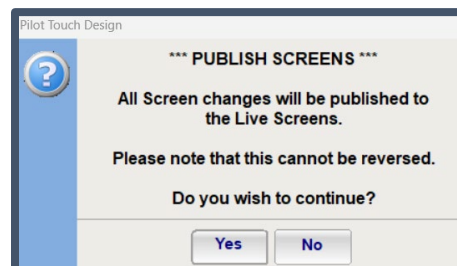


Resetting Screens and Publishing Screens

The Reset Screens button will remove any changes you have made since the previous time you have published the screens.



To make the changes go live for the waiters to use, click on the Publish Screens button. The system will warn you that this cannot be reversed. Click the Yes button if you are happy with your changes.



You will need to make sure the Pilot POS is closed on all computers before you can Publish Screens.



The system will say Publish Screens done if successful.

